

SQUIRREL

WHEEL SAFETY DEVICE

Prevent wheel loss from loose nuts with the Squirrel
Holds wheel nuts in place

- ◆ **10, 8 And 6 - Stud Versions**
- ◆ **Easily Fitted**
- ◆ **Minimum Downtime**
- ◆ **No Special Tools Required**
- ◆ **Re-useable**
- ◆ **Peace Of Mind For Drivers**
- ◆ **Cost-effective For Operators**

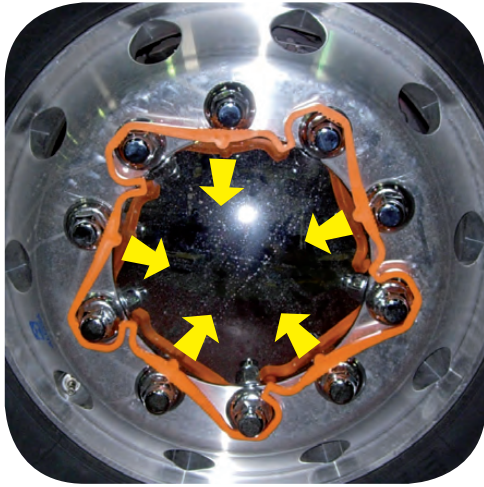


The SQUIRREL is manufactured in one piece, lightweight, impact-resistant, engineered nylon.
Resistant to temperature extremes, paint and most chemicals.

For use on most standard 10, 8 & 6 stud truck, trailer, coach and
plant 16" – 22.5" Rims with 24-33 mm nuts.

Fitting instructions

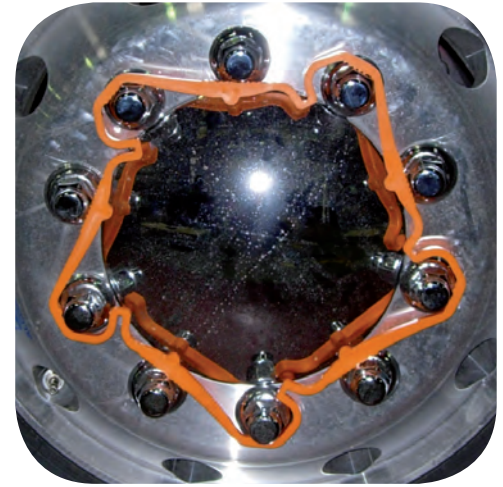
Fit only to pre-torqued, undamaged wheels and fixings.



Stretch the squirrel in direction of arrows. Start fitting the squirrel from the least accessible position (ie from the bottom of a wheel). Weave the squirrel alternately inside every other wheel-nut working upward towards the top of the wheel.



Using a screwdriver, lever the last part of the squirrel into position while pushing firmly towards the rim.



Lightly tap the squirrel towards the wheel ensuring it does not ride over any spigot washers.

Routine torque checking

Simply move the SQUIRREL sideways using a screwdriver or remove completely and torque in the normal way then refit.